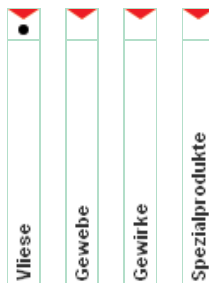
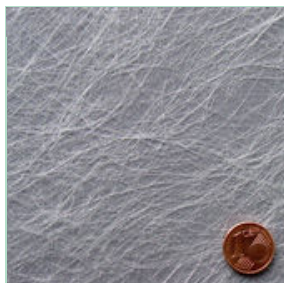


KOB AU Poly-Vlies W 30



Type of crack / symbol



Field of application / properties

KOB AU Poly-Vlies W 30 is intended for the reinforcement of paint systems in case of plaster surface cracks type A.1 according to the classification in the BFS notice no. 19. KOB AU Poly-Vlies W 30 is preferably used for the reinforcement of hairline and net cracks in silicone resin or mineral paint systems highly permeable to water vapor. KOB AU Poly-Vlies W 30 serves also for the reinforcement as well as increase of the layer thickness in flexible coating systems. The product is a polyester/polyamide fleece consisting of continuous filaments that are thermally fixed. KOB AU Poly-Vlies W 30 is weatherproof, resistant to chemicals and solvents.

For use inside and outside.

Processing

Prepare the substrate to be reinforced according to the national regulations and/or BFS notices. Subsequently, apply embedding material uniformly until saturation using a roller or spray gun. Embed KOB AU Poly-Vlies W 30 from the roll or as a ready-cut in the wet paint avoiding wrinkle formation and bubbles. The webs should overlap in a width of approx. 5 cm. In case of complete reinforcement, roll KOB AU Poly-Vlies W 30 preferably from top to bottom. Smoothen the overlapping area to fleece thickness. After complete drying, apply the intermediate and finishing paint coat in the system.

Subsequent work is to be performed observing the instructions of the manufacturer in each case.

Technical data

Quality	▶ PES / PA filament
Colour	▶ natural white
Stabilization	▶ thermal
Spec. weight DIN 53854	▶ abt. 30 g / m ²
Thickness	▶ abt. 230 µm
Max. longitudinal tensile force	▶ abt. 65 N / 5 cm
Max. transverse tensile force	▶ abt. 50 N / 5 cm
Longitudinal elongation	▶ abt. 18 %
Transverse elongation	▶ abt. 18 %
Longitudinal tear propagation load	▶ abt. 40 N
Transverse tear propagation load	▶ abt. 40 N

Delivery form

Roll dimensions: 1.00 m x 50 m
(other dimensions on request)

Tools

Roll, brush, sprayer or rubber blade

Required material

approx. 300 - 1000 ml / m² embedding material as a function of the substrate roughness

Storage

dry, cool, in closed spaces

Note

Perform subsequent work taking into account the instructions of the manufacturer in each case.

The above statements reflect the current stage of development and make no claim to be exhaustive. As the application and use of our product is beyond our control and variations in use, modes of operation and materials must be tailored to the prevailing working conditions, this technical information cannot be regarded as legally binding. This edition supersedes previous technical instructions.